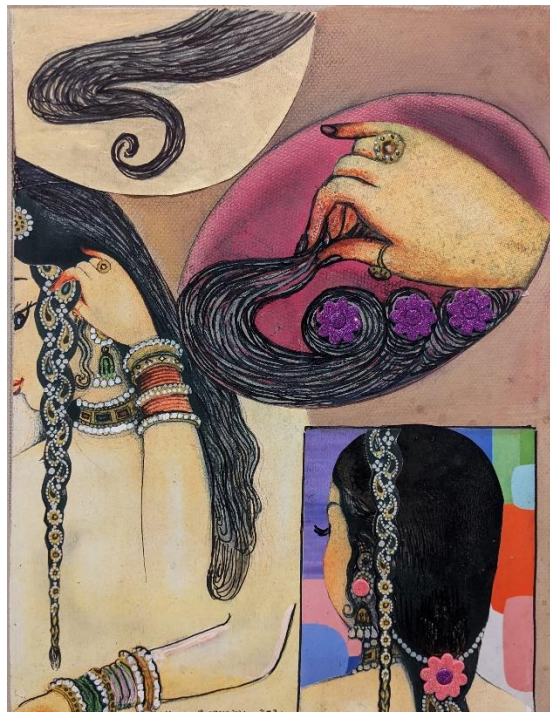
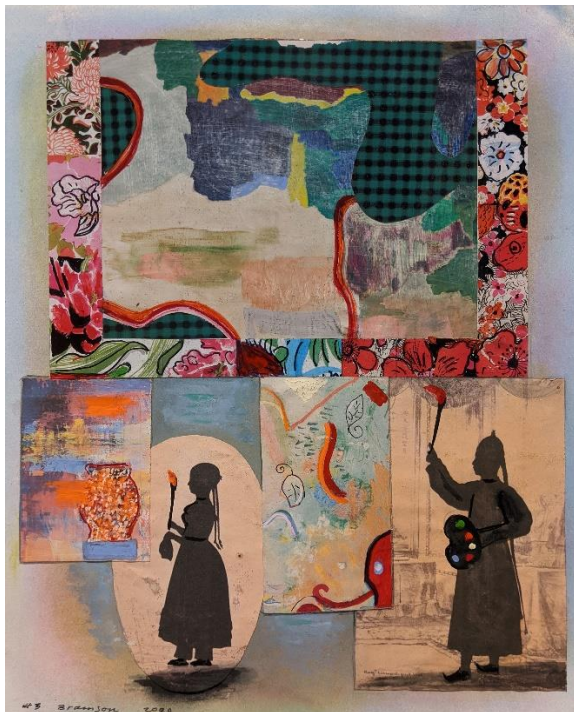


# ZOLLA/LIEBERMAN GALLERY INC.



## PHYLLIS BRAMSON

### *Virus Lockdown Drawings*

December 11 – January 16, 2021

---

The *Virus Lockdown Drawings* were done away from my studio and in my house. I set up a small studio which took over our family room making it a big mess. I worked on these drawings from March 29th until June 13th. Collaging images from ads and articles from ARTFORUM (that I had never opened) was a jumping off point for these drawings. Using a portfolio of 16 x 13 inch drawing paper, there was a lot of collaging, gluing, use of watercolor, chalk, spray paint, and pencil.

What was of interest is I normally do not work in a sketchbook as I use spontaneous improvisation when I make my work. On a smaller scale, things became so much more direct than they do when I am painting in the studio. Have these drawings affected my work now that I am back in the studio...maybe a little! However, in many ways, don't we all still feel like we are in lockdown?

- Phyllis Bramson, 2020